

SON SALLE WELDENS

Micros dynamiques 3x SM58
2x AKG D5
3x SM 57

1x Microphones Beyerdynamic M201N 1x E609
1x beyerdynamic TG58
1x BD 300 Tbone

Micros statiques
2x Microphones Audio Technica ATM450

Boitiers Direct Input 2x DI BSS AR116
2x DI palmer 02 mono 2x DI palmer 04 Stereo

Pieds
4x grands perchette

2x grands
3x petits perchette (2 en attente) 1x petit embase lourde
1x petits embase pliable

Diffusion
Console Behringer X32 producer
Façade : 2x Yamaha DBR 12
Retours : 4x LD System mon101
Plateau : Patch Analogique 24/8 (16in max) lointain cour + Sspatch éclaté 8 in

LUMIERE

Ordinateur Mac Mini

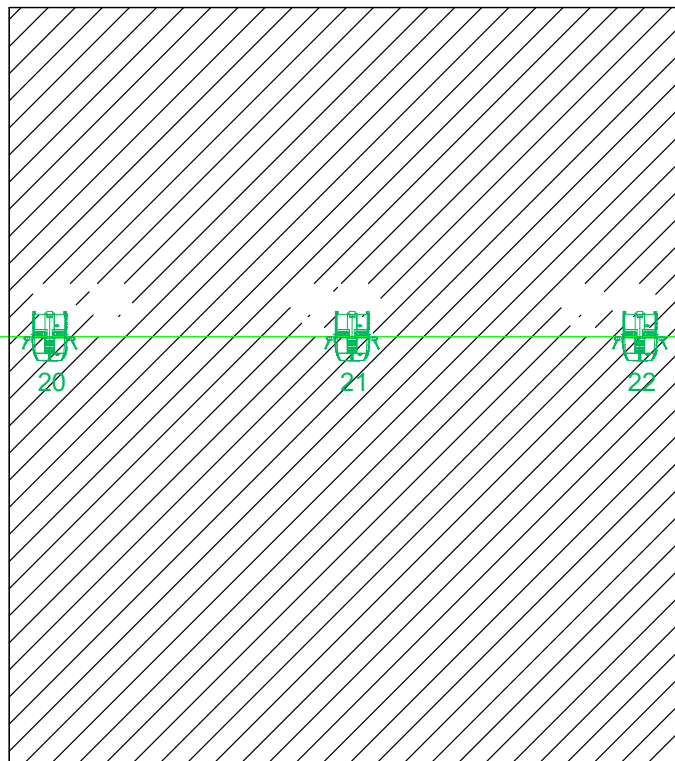
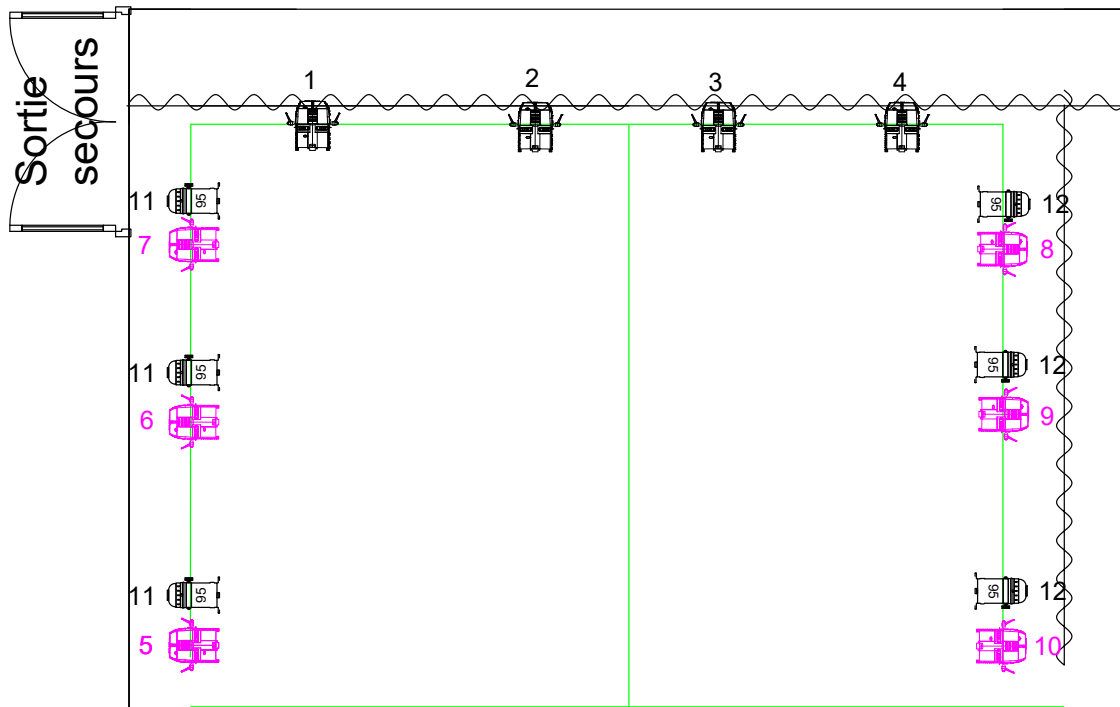
Logiciel Dlight

Controleur Panorama P1

Routeur wifi

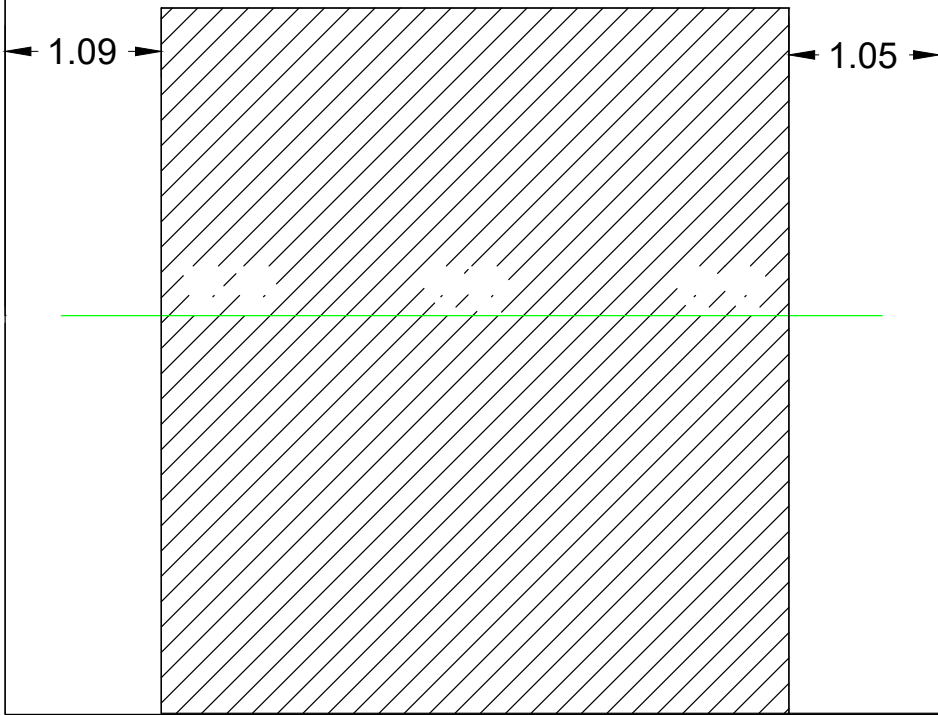
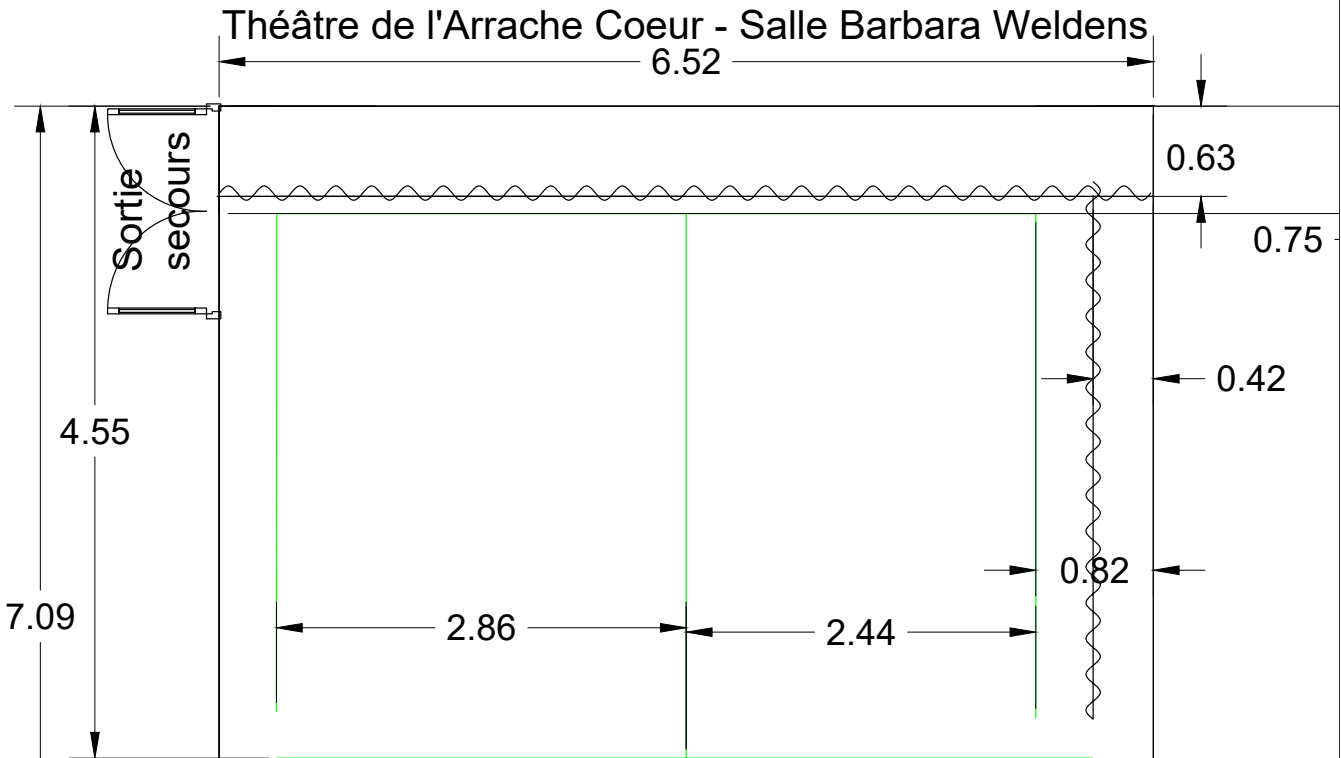
Voir plan joint



Théâtre de l'Arrache Coeur - Salle Barbara Weldens

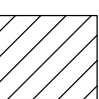






Entrée					Régie
	Par led RGBW 18x12w	Par 56 CP95	Par led RGBW 8 x 5W	Par led RGBW 7X15W Pan Tilt Zoom	
Gradin	Perche lumiere tube 30mm				

Cotes en Mètre



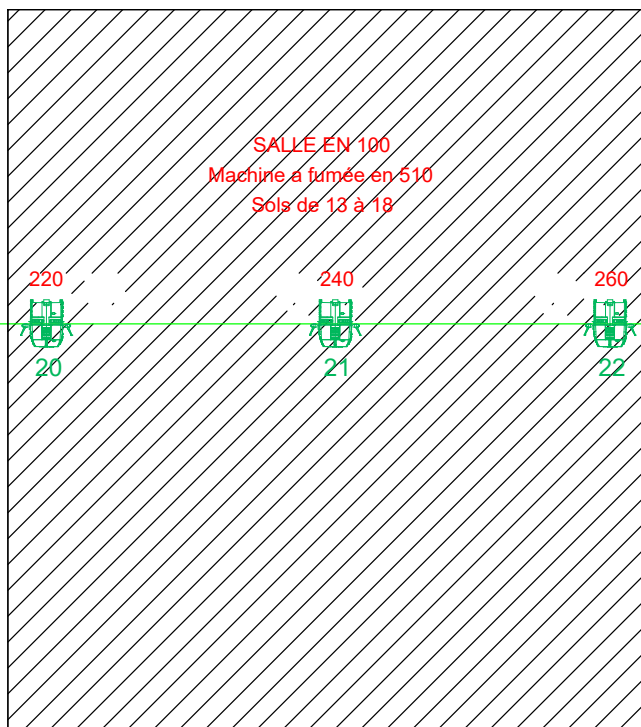
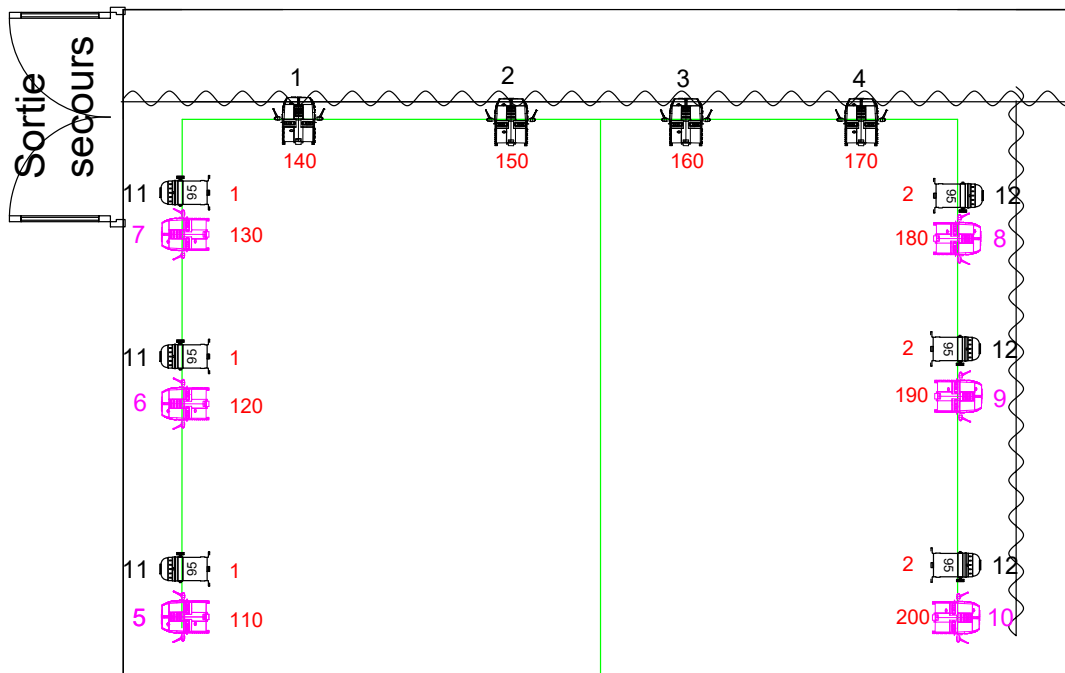
Entrée     Régie

 Par led RGBW 18x12w  Par 56 CP95  Par led RGBW 8 x 5W  Par led RGBW 7X15W Pan Tilt Zoom

Gradin  Perche lumiere tube 30mm

numero ligne dmx en rouge

Théâtre de l'Arrache Coeur - Salle Barbara Weldens



Entrée



Régie

Par led
RGBW
18x12w

Par 56
CP95

Par led
RGBW
8 x 5W

Par led
RGBW
7X15W
Pan Tilt
Zoom

Gradin

Perche lumiere tube 30mm

COUPE
Théâtre de l'Arrache Coeur - Salle Barbara Weldens

