

SON SALLE VIAN

Micros dynamiques 4x SM58

1x AKG D5

3x SM 57

1x Microphones Beyerdynamic M201N 1x E609

1x beyerdynamic TG58

1x BD 300 Tbone

Micros statiques 2x superlux cm8hk

Boitiers Direct Input 2x DI BSS AR116

2x DI palmer 02 mono 2x DI palmer 04 Stereo

Pieds

5x grands perchette

1x grands

2x petits perchette (2 en attente) 1x petits embase pliable

Diffusion

Console Behringer X 32 producer

Façade : 2x Audiophony

retours : 3 x Amadeus mpb 200 + 1x Behringer 12" + QSC amp. Plateau : 1 x Stagebox

SD16 Behringer 16i/8o + 2 x Sspatch boitier 8in

LUMIERE

Ordinateur Mac Mini

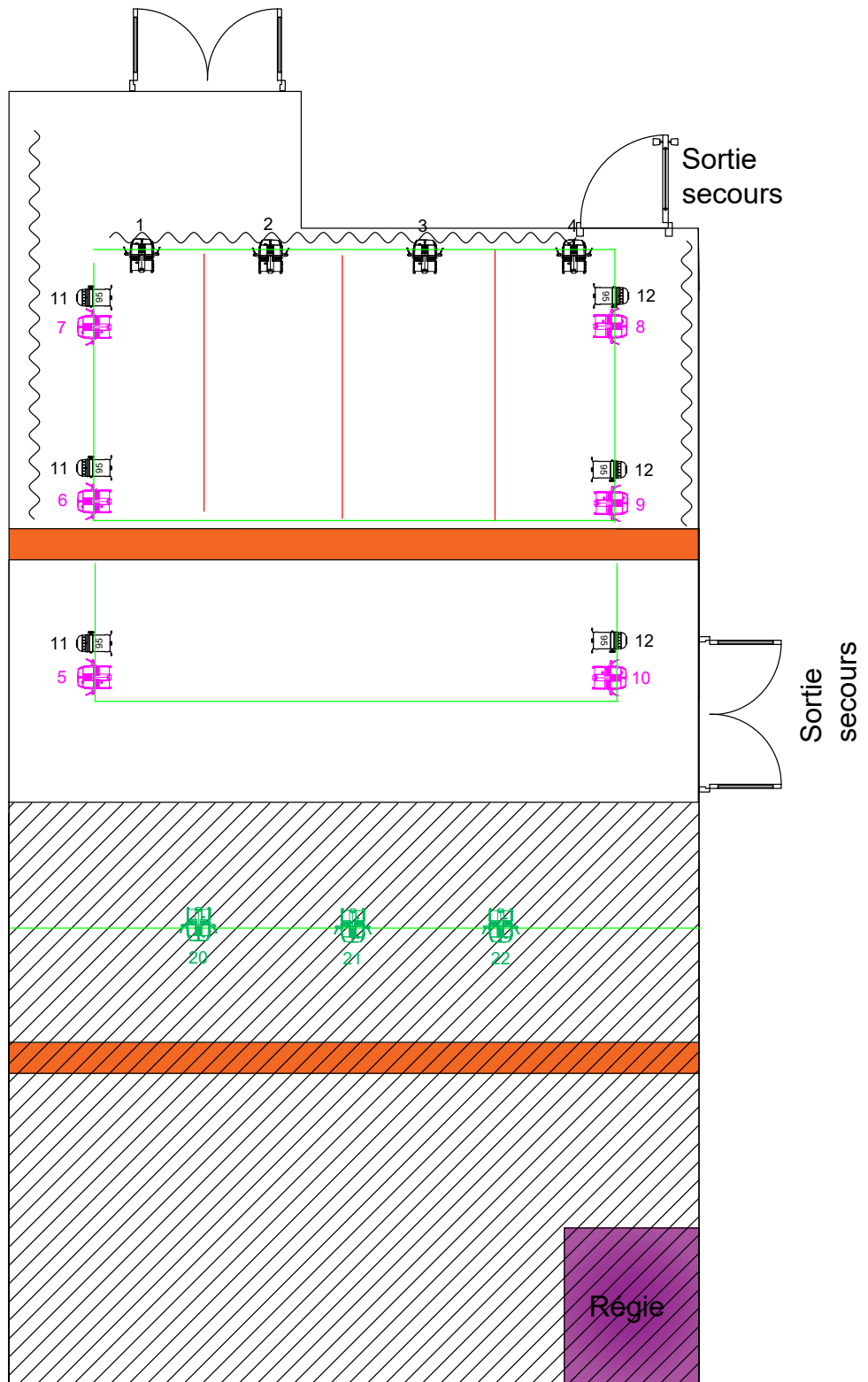
Logiciel Dlight


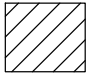




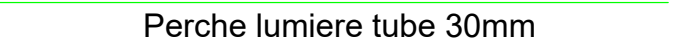

Controleur Panorama P1

Routeur wifi

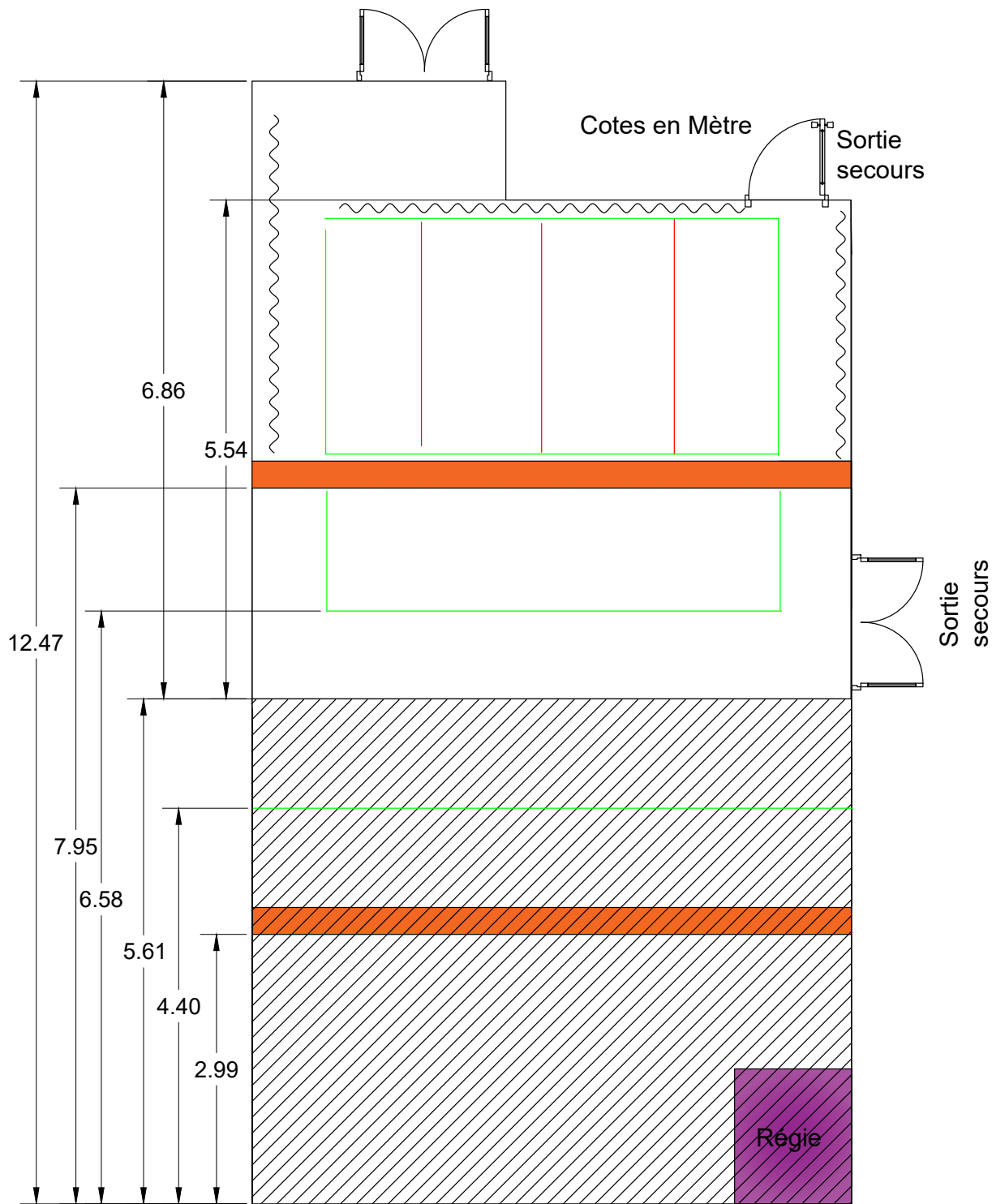
Voir plan joint

Théâtre de l'Arrache Coeur - Salle Boris Vian



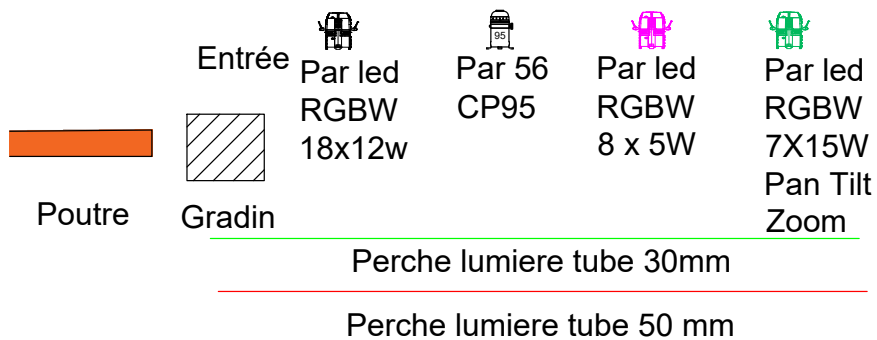
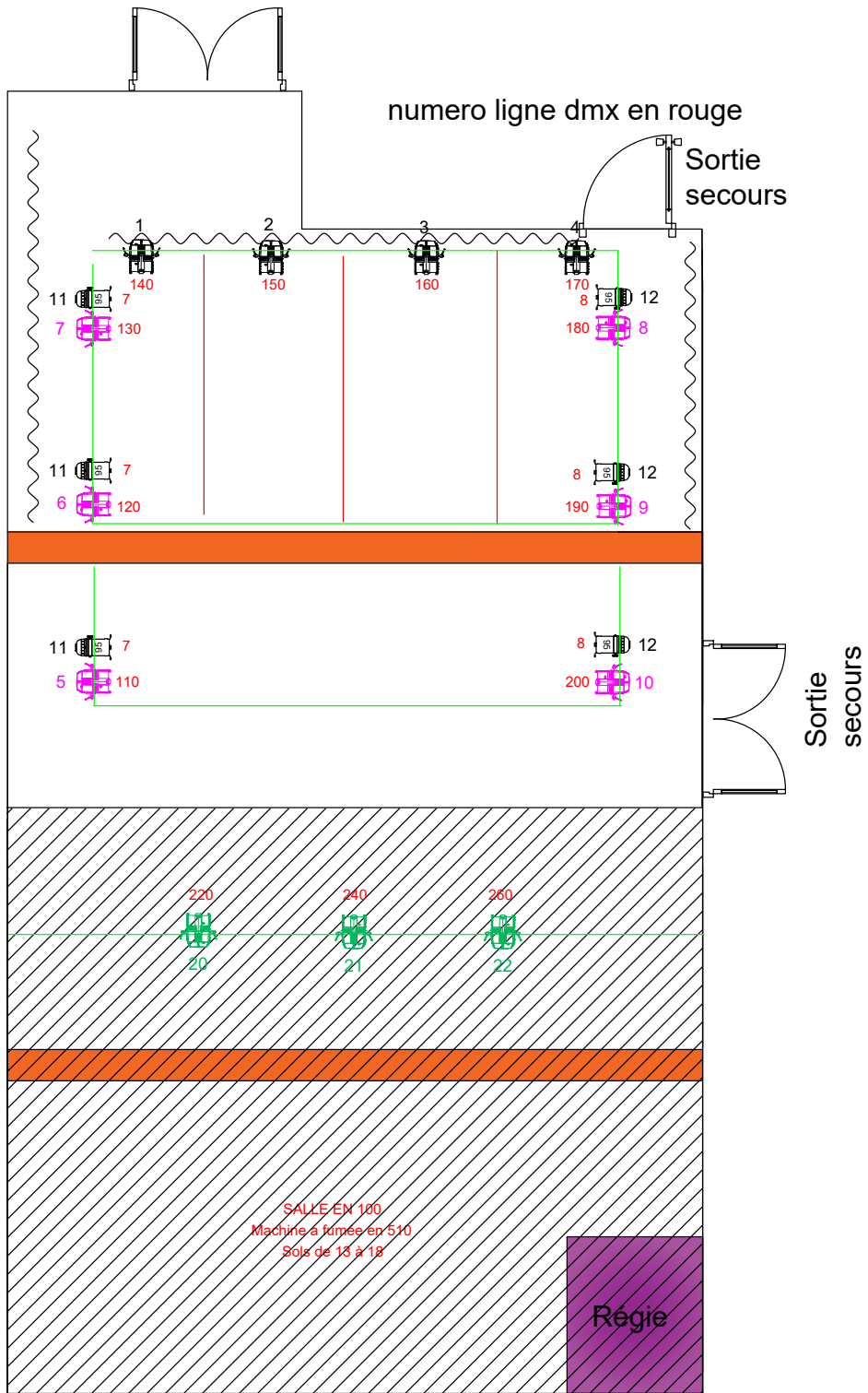
- | | | | | | |
|---|---|--|---|--|---|
|  |  |  |  |  |  |
| Poutre | Gradin | Entrée Par led RGBW 18x12w | Par 56 CP95 | Par led RGBW 8 x 5W | Par led RGBW 7X15W Pan Tilt Zoom |
| | |  Perche lumiere tube 30mm | | | |
| | |  Perche lumiere tube 50 mm | | | |

Théâtre de l'Arrache Coeur - Salle Boris Vian



- | | | | | |
|---------------------------|---------------------------|--------------------------|---------------------------|--|
| | | 6.66 | | |
| Entrée | | | | |
| | Par led
RGBW
18x12w | Par 56
CP95 | Par led
RGBW
8 x 5W | Par led
RGBW
7X15W
Pan Tilt
Zoom |
| Poutre | Gradin | Perche lumiere tube 30mm | | |
| Perche lumiere tube 50 mm | | | | |

Théâtre de l'Arrache Coeur - Salle Boris Vian



COUPE

Théâtre de l'Arrache Coeur - Salle Boris Vian

